

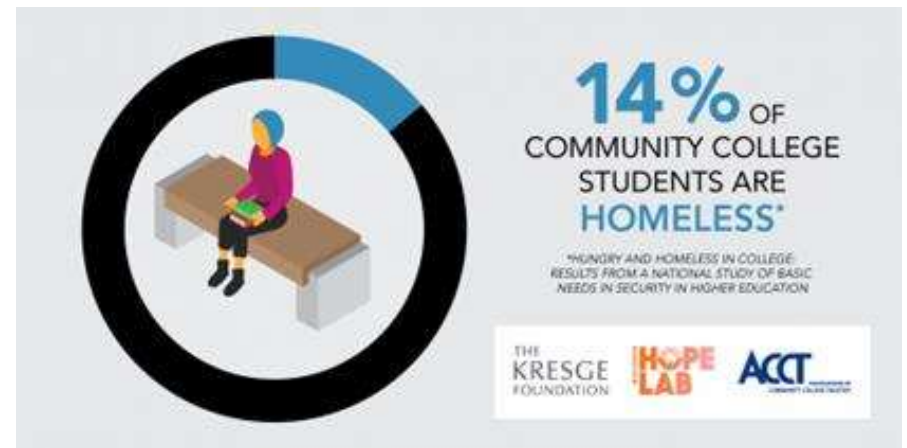
# Hospitality Resource Center

---

Sample of UTSA Student Work - 2024

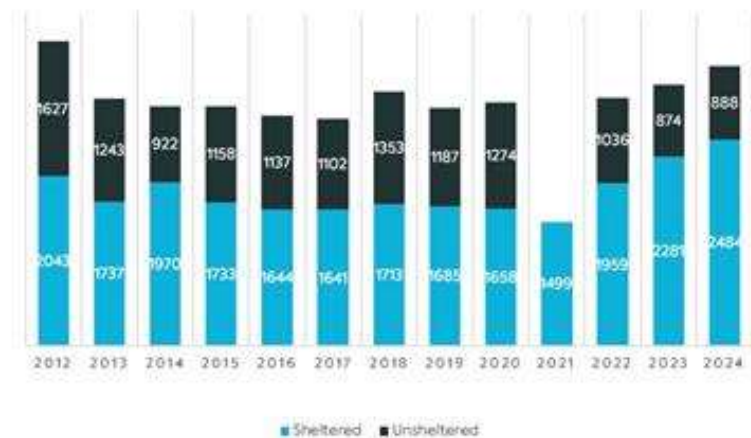
## The Problem:

- According to the U.S. Department of Education, **8% of American Undergraduate Students** and **6% of Graduate students in the US are homeless.** (figure 1)
- In San Antonio, our homeless population has increased 7% just this year. (figure 2)
- Many students on campus, including those facing homelessness or lacking access to basic amenities, struggle with the availability of clean clothing and personal hygiene facilities.
- Currently, **no dedicated facilities** on campus offer essential services like **washers, dryers, and showers**, leaving a critical gap in support for these students



### Change Over Time (PIT & Percentage of Overall Pop)

For the 2024 count, 3,372 individuals were counted as experiencing homelessness. Of that, 888 individuals were unsheltered, and 2,484 were sheltered.

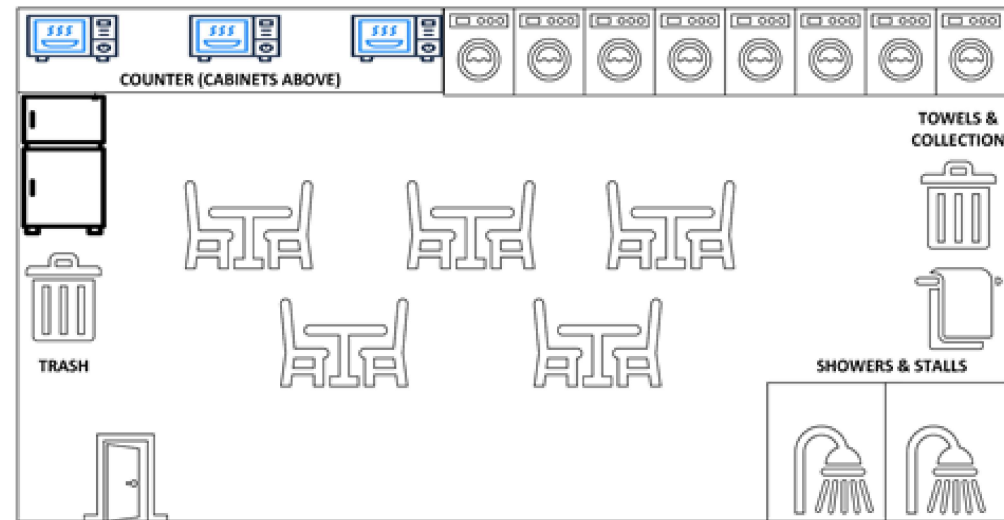


## Our Solution:

- A space on campus providing washers, dryers, and showers to support homeless students and those without access to these amenities
- The space also includes microwaves and a fridge, providing a place where students can prepare and eat meals

### Limited Access

- Students must get approval from an advisor to ensure the facility serves those in need.



# What's it going to cost?

Fixed Cost	Variable
4x Washers (@ \$600/unit) \$2,400	Annual Unit Maintenance x4 Units: \$600
4x Dryers (@ \$600/unit) \$2,400	Annual Unit Maintenance x4 Units: \$600
2x Shower (@ 1000/unit) : \$2,000	
2x Shower Stalls (@ 275/unit) + Installation: \$700	
1x Countertop (@ 34/sq. ft.) + Installation: \$1,000	
2x Cabinets (@ 120/unit) + Installation: \$500	
60x Towels (@ 18/dozen): \$90	Annual Restock/Replace: \$360 (Replaced Every 90 Days @ \$90/restock)
1000x Paper Products (Plates @ 50/1000 Units Cutlery @ 40/1000): \$90	Annual Restock/Replace: \$360 (Restocked Every 90 Days @ \$90/restock)
3x Microwaves (@ 50/unit): \$150	
1x Fridge (@ 200/unit): \$200	
Plumbing Installation: \$4,800	
Electrical Installation: \$600	
<b>Fixed Cost Total: \$14,930</b>	<b>Total Variable Cost: \$1,920</b>

- Unit Costs are average costs of units as of 10/1/24
- Installation Costs are based on an estimates from Reliant Plumbing & All Star Electric on 9/30/24
- Unit Maintenance cost is an approximation based on average costs of annual repair for washer/dryers

# Continued Funding?

## **Maintenance and Restocking cost:**

- UTSA can cover the center's ongoing costs within its existing annual maintenance allocation
  - In 2023, UTSA spent \$200k less than budgeted, with similar savings in 2022 and 2021
  - This surplus allows for
    - Regular Maintenance to ensure cleanliness of facilities
    - Restocking of essential supplies like towels, paper plates, and cutlery
-

# Continued Development & Conclusion

## Hours of Operation:

- Open daily from 7:00 AM-11:00 PM, allowing accessibility throughout the day to accommodate student schedules

## Staffing:

- Could be monitored through a mix of volunteer support and work-study opportunities, offering experience to students while minimizing possible staff cost

## Additional Resources:

- Information and guidance could be made available on home assistance and food assistance programs
  - Provided through posters, brochures, and website resources.
  - Detergent, soap, and other personal supplies will **not** be provided initially, but future development could include offering these items at low cost to students.
-

# Works Cited and Price Estimate Sources

<https://www.npr.org/2024/03/15/1238986250/encore-what-its-like-to-be-a-homeless-college-student#:~:text=VANDENEINDE:%20Eight%20percent%20of%20American,independent%20researcher%20Sara%20Goldrick%2DRab.>

<https://www.utsa.edu/budget/irm/annual-budget-statements/reports/irm-fy24-annual-budget-statement.pdf>

<https://sanantonioreport.org/san-antonio-homeless-population-point-in-time-count-2024/>

<https://www.homedepot.com/b/Appliances-Washers-Dryers-Washing-Machines-Top-Load-Washers/N-5yc1vZc3ocZ12I9?sortorder=asc&sortby=bestmatch>

<https://www.fastpartitions.com/powder-coated-metal-toilet-partitions/>

<https://www.homedepot.com/b/Bath-Showers-Shower-Stalls-Kits/N-5yc1vZbza7>

<https://www.homedepot.com/b/Kitchen-Kitchen-Cabinets-In-Stock-Kitchen-Cabinets-Ready-to-Assemble-Kitchen-Cabinets/N-5yc1vZ2fkowpz>

<https://www.homedepot.com/p/Custom-Laminate-Countertop/310171055>

<https://www.towelsupercenter.com/product/wholesale-bath-towel>

<https://www.columbusliquidationcenter.com/product-page/magic-chef-7-3-cu-ft-2-door-mini-fridge-in-platinum-steel-with-freezers-22x44-w-blue-stripe-economy/>